



# Ultra™

bottle and teat instructions

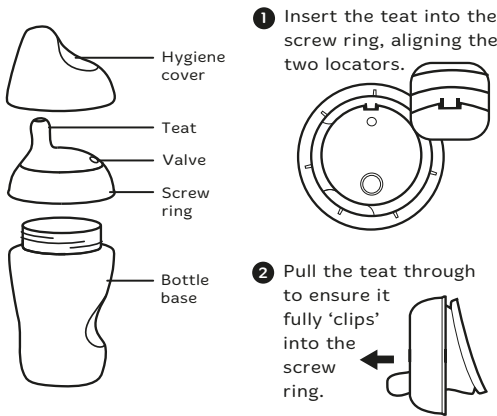
Dear Customer,

**Congratulations on choosing the Tommee Tippee Ultra bottle. To help you get the most out of this bottle we recommend that you read these instructions carefully.**

**Every moment you share with your baby is special. And when it's time for their bottle, you want it to be a relaxed experience for both of you. Our new Ultra bottles feature our unique 'contoured and angled' teat, helping your baby latch on, stay on and feed comfortably.**

**Here's to the perfect feeding experience!**

## Product Assembly



REMEMBER: You don't have to disassemble the teat and screw ring for sterilising.

## Quick Start

- 1 Before use, wash all parts in warm soapy water, rinse in clean water and sterilise.
- 2 Assemble your bottle as per the diagram.
- 3 When assembling your bottle it is important that you check the valve by holding it to the light to check that the slit in the silicone has not sealed closed. If it has sealed closed, pinch it gently with teat tongs to re-open. If the valve has sealed closed your bottle will not vent properly.
- 4 Make up your feed.
- 5 Serve.
- 6 After use, wash all parts in warm soapy water, rinse in clean water, ready to sterilise once more.



## Cleaning and Sterilising

- ✓ Before first use, clean the product.
- ✓ Clean before each use.
- ✓ Always wash the product immediately after use.
- ✓ Before first use place in boiling water for 5 minutes. This is to ensure hygiene.
- ✓ Wash in warm soapy water and rinse in clean water or use a dish washer (top shelf only).
- ✓ For cleaning other bottle parts, use a closer to nature teat & spout brush.
- ✓ Once you have cleaned your bottles they are ready to sterilise.
- ✓ All bottle components should be sterilised.
- ✓ All bottle components are suitable for sterilisation by steam (electric or microwave), boiling or cold water tablet / liquid solution.
- ✓ **TAKE EXTRA CARE** when cleaning the valve. In order to ensure optimum venting the teat valve is manufactured using a thinner silicone than the teat itself and therefore care needs to be taken during cleaning to ensure no damage is caused.
- ✗ Do not allow product to come into contact with oil based foods (e.g. oil / tomato based sauces) as staining will occur.
- ✗ Do not clean with solvents or harsh chemicals.
- ✗ Do not turn the teat inside out for cleaning. Damage could result.
- ✗ **DO NOT USE A TEAT BRUSH** or any other implement to clean the valve / the feeding hole as damage such as splits and tears may occur. However, performance of the teat may be affected if the valve is not cleaned thoroughly after each use. Ensure valve is flushed with warm water during cleaning.

## Storage and Use

- ✓ Inspect before each use and pull the feeding teat in all directions. Throw away at the first signs of damage or weakness.
- ✓ Keep all components not in use out of reach of children.
- ✓ For safety and hygiene reasons it is recommended that the feeding teat is replaced every 2 months.
- ✓ When making up a feed, follow the formula milk manufacturer's instructions.
- ✗ Do not store or leave in direct sunlight or near a source of heat or leave in disinfectant ("Sterilising Solution") for longer than recommended, as this may weaken the teat.
- ✗ Do not store with or allow to come into contact with solvents or harsh chemicals.
- ✗ Not suitable for use in a conventional oven or a combination microwave oven with the grill feature switched on.
- ✗ Do not heat in a microwave with bottle sealed. Remove teat, locking ring and dome cap.

## Warnings

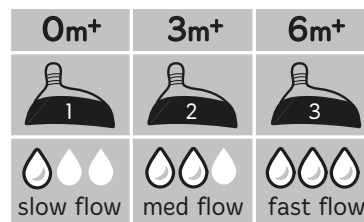
### FOR YOUR CHILDS SAFETY & HEALTH WARNING!

- ✓ Always use this product with adult supervision. Accidents have occurred when babies have been left alone with drinking equipment due to the baby falling or if the product has been disassembled.
- ✓ Always check food temperatures before feeding. Heating in a microwave oven may produce localised high temperatures. Take extra care when microwave heating.
- ✓ Always stir heated food to ensure even heat distribution and test the temperature before serving.
- ✗ Never use feeding teats as a soother.
- ✗ Continuous and prolonged sucking of fluids will cause tooth decay. Tooth decay in young children can occur even when non-sweetened fluids are used. This can occur if the baby is allowed to use the bottle for long periods through the day and particularly through the night, when saliva flow is reduced or if it is used as a soother.

### Please remember..

it is important to increase the flow rate of your teat as your baby grows.

**Ultra teats are available in the following flow rates:**



### Any questions?

Visit our website [www.tommeetippee.com](http://www.tommeetippee.com)  
call us FREE on 0500 97 98 99 (UK only)

[tommeetippee.com](http://tommeetippee.com)